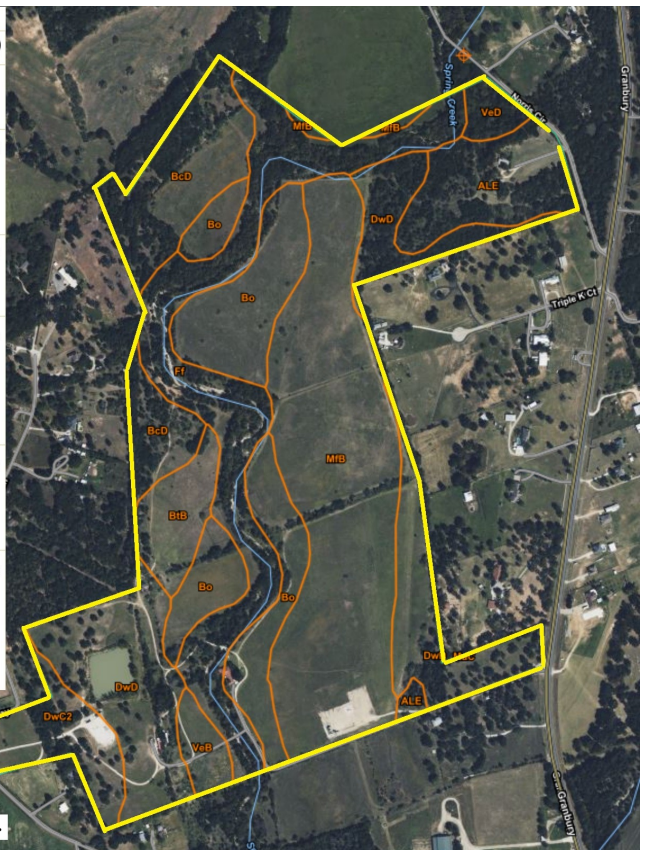


				Parker County, Texas (TX367)			
				Parker County, Texas (TX367)			
				Map Unit Symbol	Map Unit Name	Acres in AOI	Percent of AOI
DwD	Duffau-Weatherford complex, 3 to 8 percent slopes	38.6	17.9%	ALE	Aledo-Bolar association, 1 to 8 percent slopes	14.2	6.6%
Ff	Frio clay loam, 0 to 1 percent slopes, frequently flooded	34.9	16.1%	BcD	Bolar clay loam, 5 to 8 percent slopes	20.8	9.6%
MaC	Maloterre gravelly clay loam, 1 to 8 percent slopes	0.1	0.0%	Bo	Bosque loam, 0 to 1 percent slopes, occasionally flooded	31.1	14.4%
MfB	May fine sandy loam, 1 to 3 percent slopes	52.6	24.3%	BtB	Bastil loamy fine sand, 1 to 3 percent slopes	7.4	3.4%
VeB	Venus loam, 1 to 3 percent slopes	3.4	1.6%	DwC2	Duffau-Windthorst complex, 1 to 5 percent slopes, moderately eroded	9.8	4.5%
VeD	Venus clay loam, 5 to 8 percent slopes	2.7	1.2%				
WoB2	Windthorst fine sandy loam, 1 to 5 percent slopes,	0.7	0.3%				



Yellow boundary lines are not exact and the above information was obtained from the NRCS website.